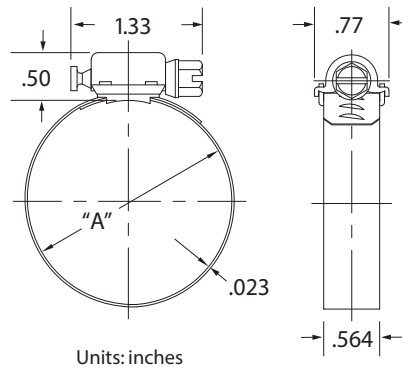


A heavy-duty stainless steel worm-drive hose clamp designed for quick assembly in a variety of applications.

Arcial Perforations | Quick-Connect Fastener | All 300-Series Stainless Steel | Diameter Range 9/16" – 12 1/4"

SS Pipe Flashing Clamp
Pivoting Hex Screw Assembly
Band in 300-Series Stainless Steel
Housing



SAE	inches (A)		mm	
	min	max	min	max
72	1 7/8	5	48	127
128	5 5/8	8 1/2	143	216

Unique Quick-Connect design allows for tightening the band to desired position by sliding under the screw prior to engagement

