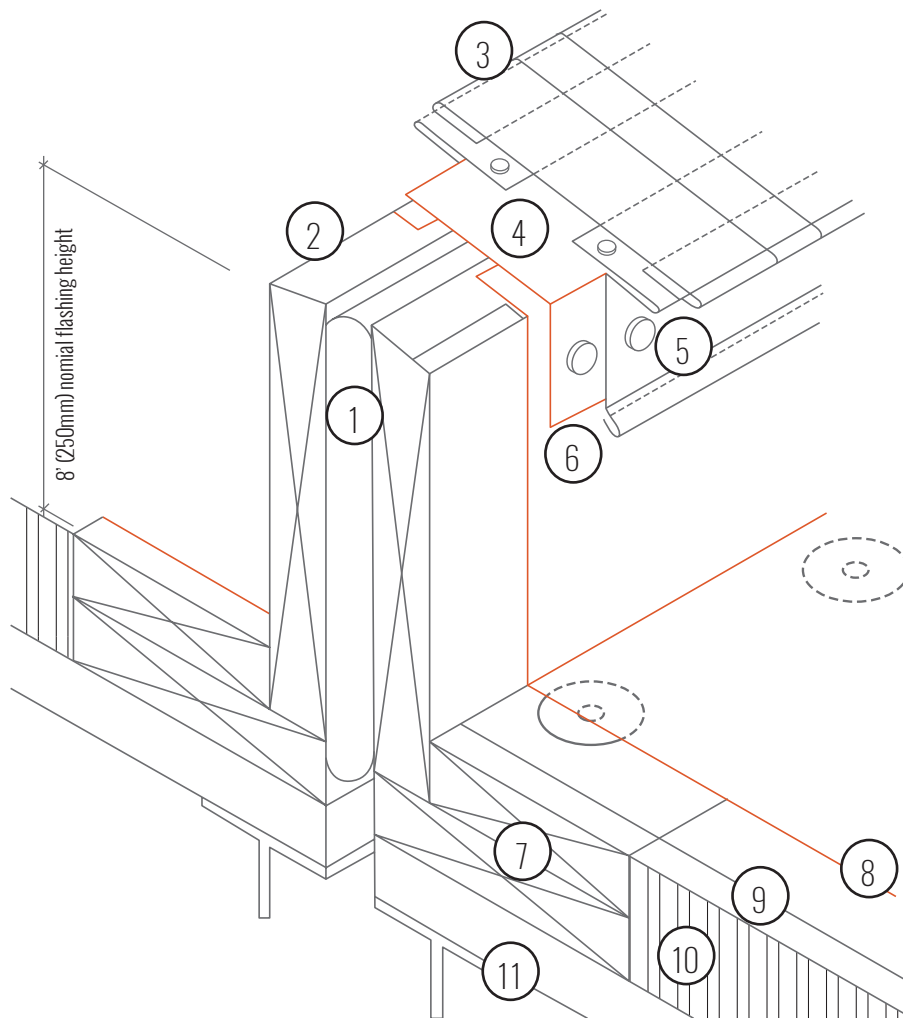


EXPANSION JOINT CURB

- | | |
|--|---|
| 1. Foam Rod (50% compression) with Pocket Loop | 7. Wood Blocking |
| 2. Expansion Joint Curb | 8. True Seal™ Field Membrane |
| 3. Sheet Metal Expansion Joint Cover | 9. Vapor Barrier |
| 4. Sheet Metal Expansion Joint Cover Cleat | 10. Approved True Seal™ Insulation and/or Cover Board |
| 5. Approved True Seal™ Fastener with Grommet | 11. Roof Deck |
| 6. True Seal™ Flashing Membrane | |



Notes:

- Please refer to the True Seal™ Specification Manual for approved Insulations and Cover Boards
- Pocket loop must be secured to prevent the foam rod from collapsing down into the expansion joint
- Install T-patches on all step-downs
- Foam rod must be compressed 50%
- True Seal membrane flashing must be in a minimum of 6" (horizontal) on each side of expansion joint
- Perimeter securement (mechanical perimeter securement) is required on all expansion joints (each side) and is typically 12" on center.
- Nailers must be secured (minimum 24" on center) as per True Seal™ specifications or FM Global, whichever is greater
- Sheet Metal Expansion Joint Cover must have expansion s-locks in parallel direction to expansion joint
- Sheet Metal Expansion Joint Cover must have expansion pockets in perpendicular direction to expansion joint
- True Seal™ Flashing membrane shall be 100% adhered with True Seal™ Low VOC @ 60ft²/gallon.
- Please contact the True Seal™ Technical Department for clarifications or questions at tech@true-seal.com