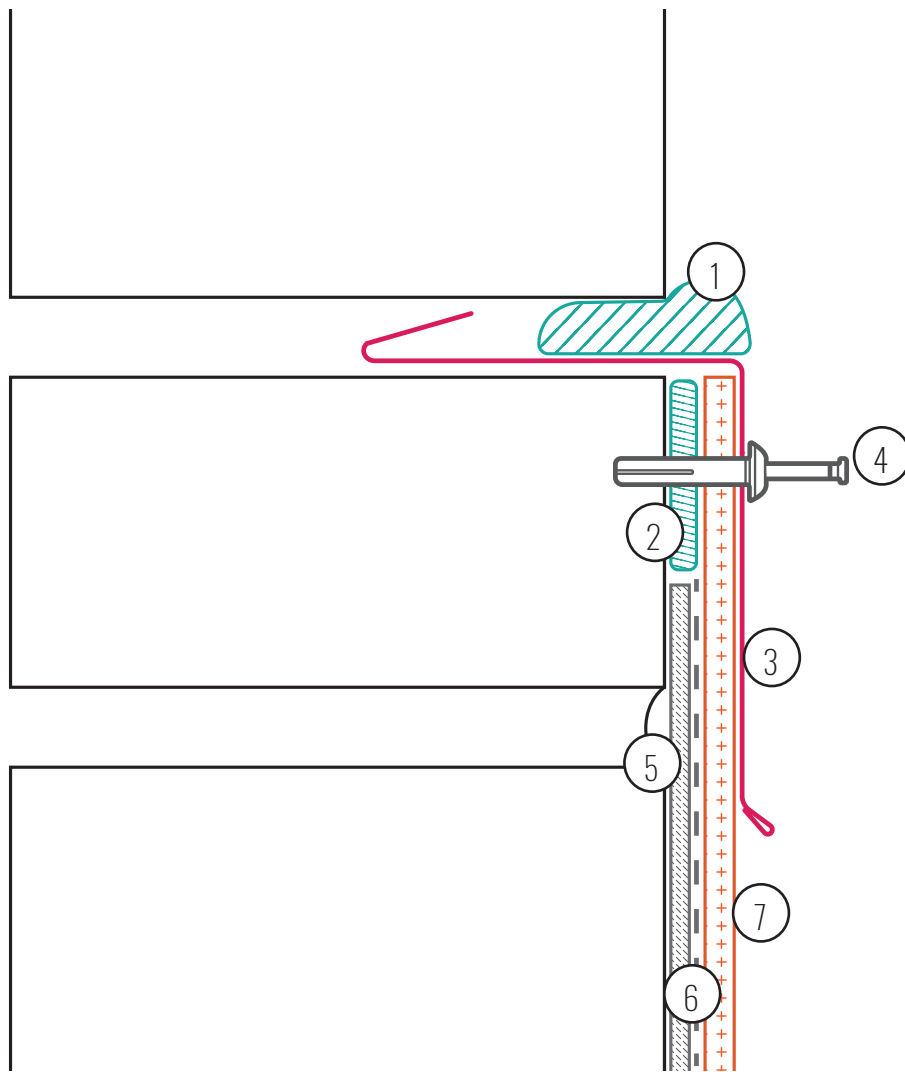


## REGLET COUNTER FLASHING DETAIL

1. True Seal™ Caulking
2. Term Bar Butyl Tape
3. Metal Reglet Counter Flashing
4. True Seal™ Approved Masonry Anchor

5. Approved Insulation, Cover Board or Substrate
6. Bonding Adhesive
7. True Seal™ Membrane (Flashing)



**Notes:**

- Approved Masonry Anchor must penetrate metal reglet counter flashing, membrane and term bar butyl tape all in alignment.
- Metal Counter Flashing must be fastened into the wall substrate at 24" on center with Approved Masonry Anchor
- Minimum reglet height above finished roof level is 8".
- True Seal sealant must be "tooled" so that water does not pool on horizontal reglet plain.
- True Seal sealant, or alternative approved sealant must be compatible with the wall medium and provide long term adhesion performance.
- True Seal membrane flashing must be in 100% adhesion with True Seal™ Low VOC @ 60ft<sup>2</sup>/gallon
- Vertical insulation, cover board, or approved substrate (if applicable) must be fastened at a rate of 1 True seal fastener and insulation plate per 2 sqft to the vertical wall.