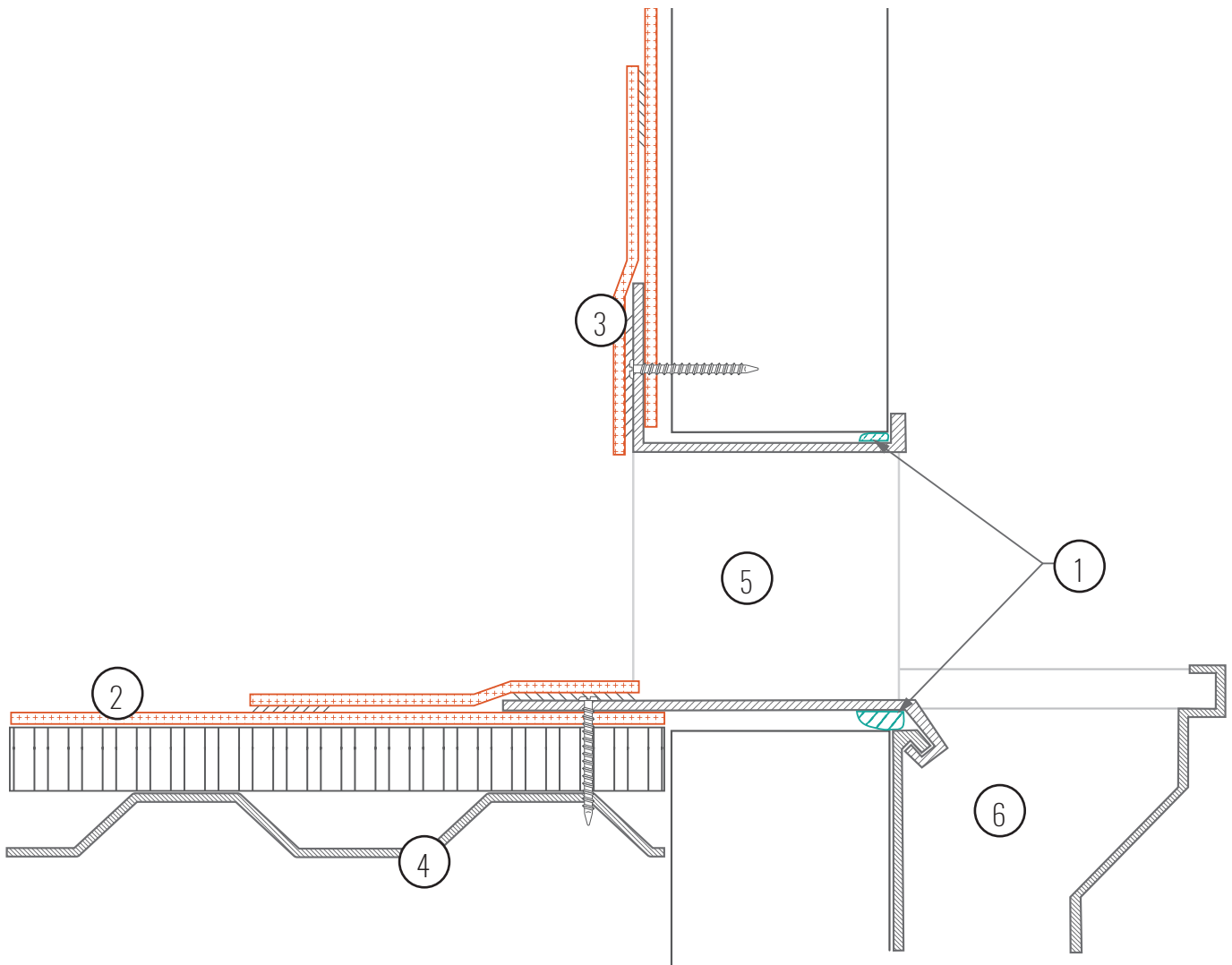


CLAD METAL SCUPPER

1. True Seal™ Approved Sealant
2. True Seal™ Field Membrane
3. True Seal™ Approved Fastener
4. Roof Deck
5. Clad Metal Scupper
6. Collector Box



Notes:

- Scupper must be securely fastened to the scupper opening with a minimum of 8 True Seal™ approved fasteners.
- Scupper flanges must have a minimum of 2 True Seal™ approved fasteners.
- At all times, the seam overlap area must be dry before field seam hot air welding
- At all times, the seam overlap area must be free of dirt, debris and contaminants before field seam hot air welding.
- Scupper should be seated in the opening to promote positive drainage and not hold water back-up on the roof area.
- Clad metal scuppers must be sized and engineered to provide the adequate run-off (drainage) yields as required by the local building code.