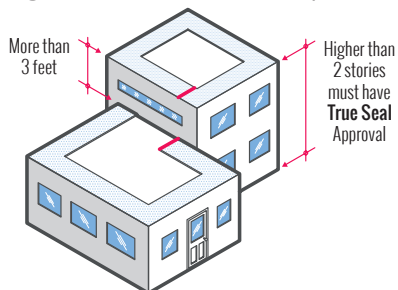


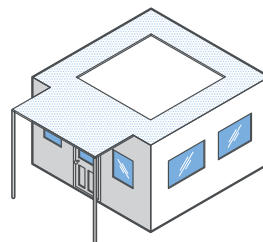
ROOF EDGE PERIMETER DEFINITIONS

Diagram 1 (Interior Roof Level Separations)



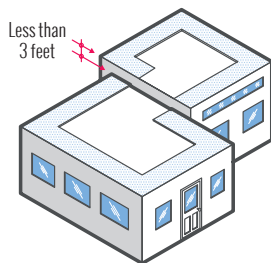
Where the vertical separation between 2 roof levels is greater than 36", the upper roof perimeter in the transition area must be considered a roof edge and perimeter perimeter enhancements for both mechanically fastened systems (half sheets) and fully adhered systems (greater insulation fastening) must be applied.

Diagram 3 (Canopies and Overhangs)



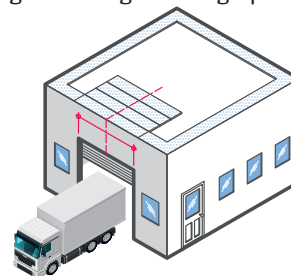
Where canopies and overhangs are present and are "open to below", perimeter enhancements for both mechanically fastened systems (half sheets) and fully adhered systems (greater insulation fastening) must be applied.

Diagram 2 (Interior Roof Level Separations)



Where the vertical separation between 2 roof levels is less than 36", the upper roof perimeter in the transition area is not considered a exterior roof edge and no perimeter enhancements are required in that area.

Diagram 4 (Large Building Openings)



Where large openings (greater than 10' wide) are present in the building, addition perimeter enhancements for both mechanically fastened systems (half sheets) and fully adhered systems (greater insulation fastening) must be applied. The Application area for these enhancements is 1.5 times the opening width in the perpendicular direction to the roof edge, and 1.2 times the opening width in the direction parallel to the roof edge.

In all cases, perimeter edge securement is always required around all roof areas at all levels

Where enhancements are applied on mechanically fastened systems, the termination of the roll (end lap) in the enhancement area must have metal membrane plates and fasteners applied at a rate of 12" on center and field laps in the are must be a minimum of 6" wide.