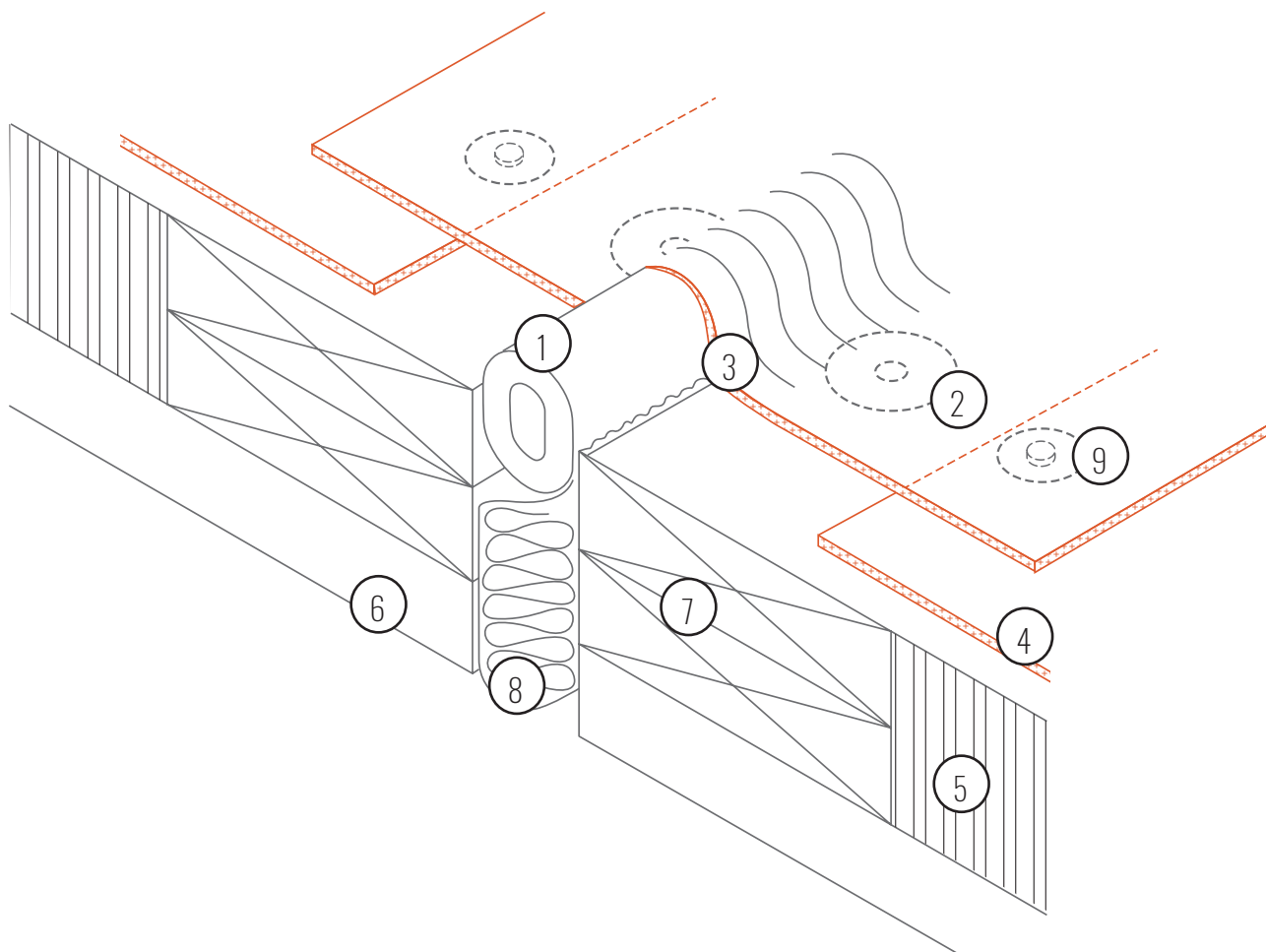


## EXPANSION JOINT DETAIL

1. Foam Rod (50% compression)
2. True Seal™ Metal Insulation Plate and True Seal Fastener
3. True Seal™ Membrane (Flashing)
4. True Seal™ Membrane (Field)

5. Approved True Seal™ Insulation and/or Cover Board
6. Roof Deck
7. Wood Blocking
8. Compressible Insulation with Pocket Loop
9. True Seal™ Metal Membrane Plate and Fastener



### Notes:

- Please refer to the True Seal™ Specification Manual for approved Insulations and Cover Boards
- Pocket loop must be secured to prevent the foam rod from collapsing down into the expansion joint
- Install T-patches on all step-downs
- Foam rod must be compressed 50%
- True Seal™ membrane flashing must be in a minimum of 8" on each side of expansion joint
- Membrane flashing to membrane field weld shall be 1.5" minimum.
- Perimeter securement (mechanical perimeter securement) is required on expansion joints (each side) at 12" on center.
- Nailers must be secured as per True Seal™ specifications
- Please contact the True Seal™ Technical Department for clarifications or questions at [tech@true-seal.com](mailto:tech@true-seal.com)