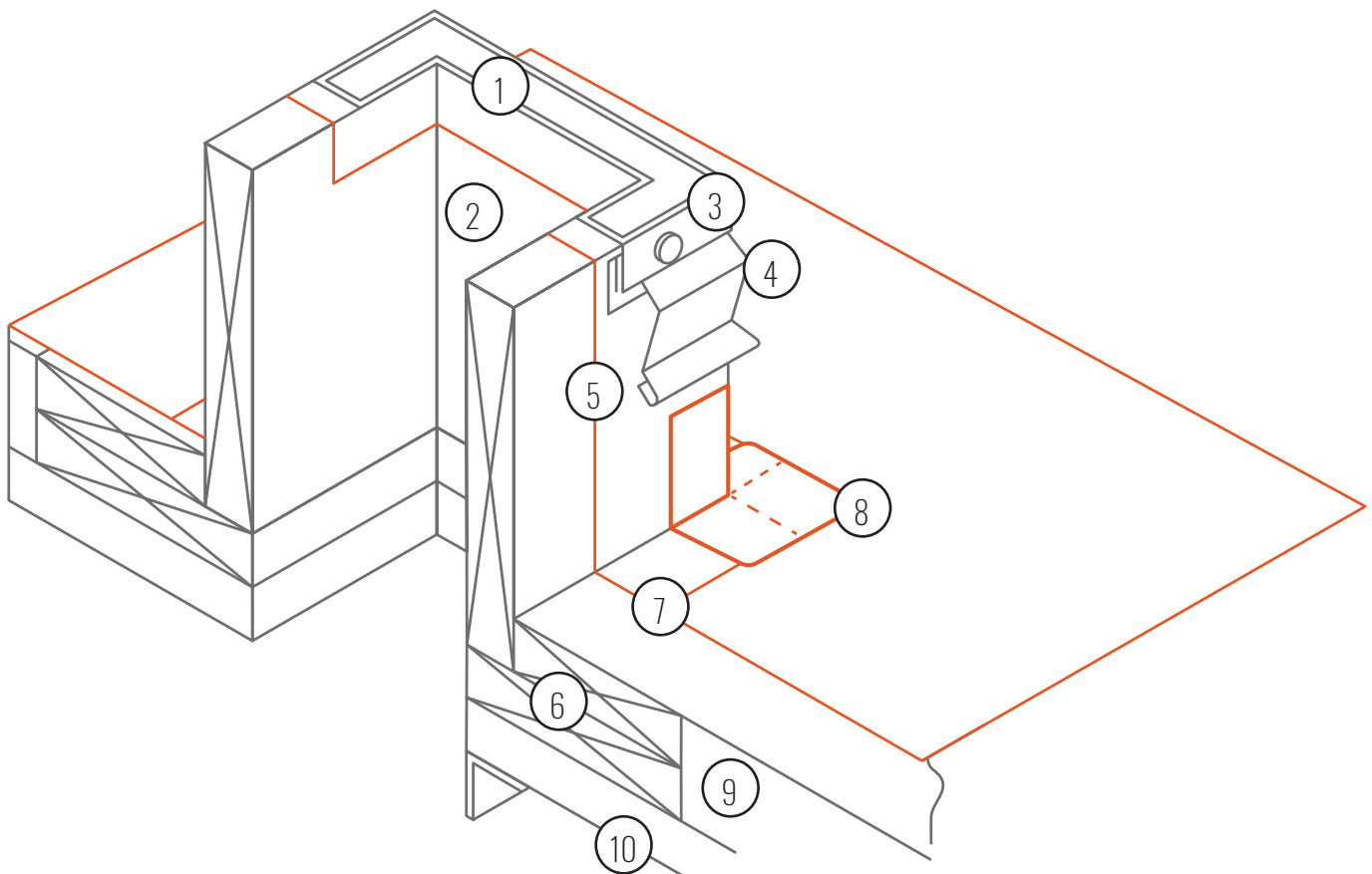


CURB DETAIL (ISOMETRIC)

1. Sealing Gasket
2. Curb
3. Curb Frame
4. Counter Flashing
5. True Seal™ Flashing Membrane
6. Blocking
7. True Seal™ Field Membrane
8. True Seal™ Outside Corner
9. Approved True Seal™ Insulation/Cover board
10. Roof Deck



Notes:

- Please refer to the True Seal™ Specification Manual for approved insulations and cover boards
- Wall insulation (if applicable) must be fastened at a rate of 1 True Seal™ Fastener and Plate per 2 sqft
- Wood nailer must be secured (minimum 24" on center) as per the requirements contained in the True Seal™ Specifications
- True Seal™ flashing membrane must be in full adhesion with True Seal™ Low VOC @ 60ft²/gallon
- Unit must be perimeter secured with True Seal™ fasteners and True Seal™ metal membrane plates fastened at 12" on center.
- Please contact the True Seal™ Technical Department for clarifications or questions at tech@true-seal.com