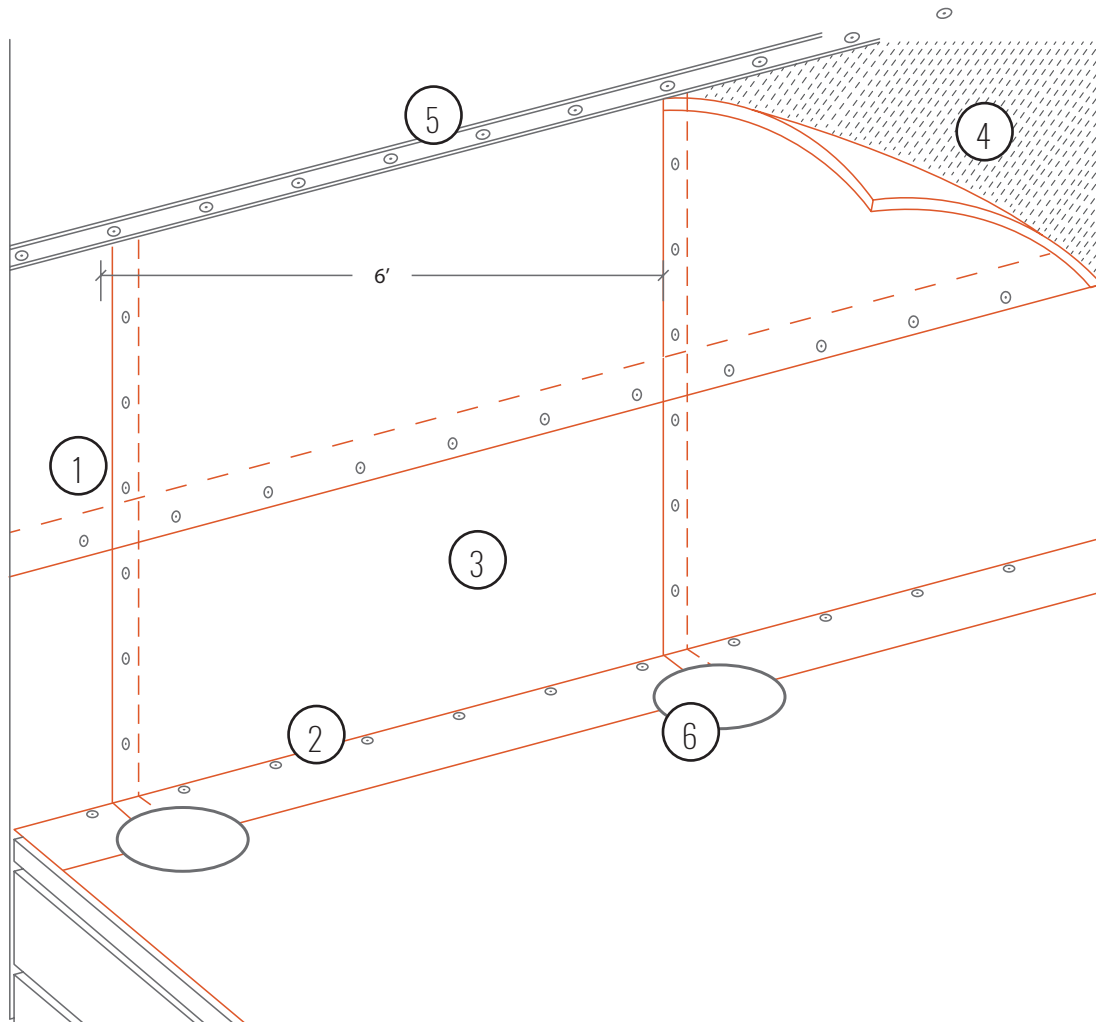


FULLY ADHERED HIGH WALL (GREATER THAN 36") HIGH WIND MECHANICAL ATTACHMENT ENHANCEMENT

1. Field seam (minimum 1.5")
2. Perimeter Securement
3. True Seal™ Membrane (Flashing)
4. True Seal™ Low VOC Bonding Adhesive
5. True Seal™ Termination Bar
6. T-Patch



Notes:

- All Wall insulation (if applicable) shall be secured with 1 True Seal™ fastener and plate per 2 sqft.
- True Seal™ Membrane (Flashing) must be in 100% adhesion with True Seal™ Low VOC @ 60ft²/gallon.
- Vertical and horizontal mechanical securement enhancements shall be at 12" on center with True Seal™ Fasteners and True Seal™ metal membrane plates.
- Panels of True Seal™ membrane (flashing) shall not be greater than 72" wide and 36" high.
- Perimeter securement must be provided at angle change at 12" on center with True Seal™ fastener and metal membrane plate
- T-patches must be installed on all t-step downs.
- True Seal™ termination bar shall be installed at the top of the wall independent of metal flashings or copings.
- Please contact the True Seal™ Technical Department for clarifications at tech@true-seal.com